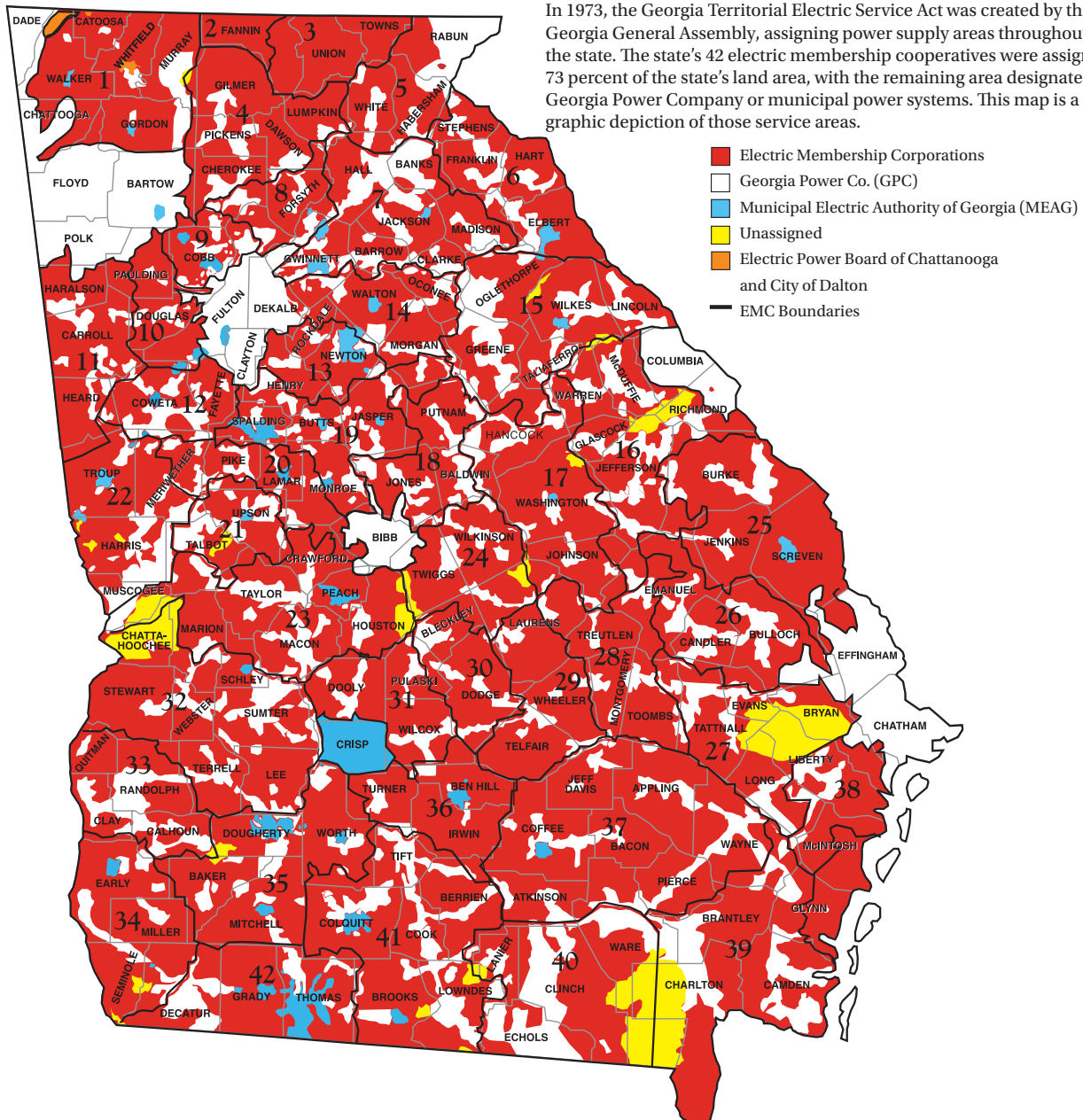


Georgia's Electric Suppliers Assigned Service Areas

In 1973, the Georgia Territorial Electric Service Act was created by the Georgia General Assembly, assigning power supply areas throughout the state. The state's 42 electric membership cooperatives were assigned 73 percent of the state's land area, with the remaining area designated to Georgia Power Company or municipal power systems. This map is a graphic depiction of those service areas.



Key to Electric Membership Corporations

- | | | | | | |
|--------------------|---------------------|---------------------|-------------------|---------------------|----------------|
| 1. North Georgia | 8. Sawnee | 15. Rayle | 22. Diverse Power | 29. Little Ocmulgee | 36. Irwin |
| 2. Tri-State | 9. Cobb | 16. Jefferson | 23. Flint | 30. Ocmulgee | 37. Satilla |
| 3. Blue Ridge Mtn. | 10. GreyStone | 17. Washington | 24. Oconee | 31. Middle Georgia | 38. Coastal |
| 4. Amicalola | 11. Carroll | 18. Tri-County | 25. Planters | 32. Sumter | 39. Okefenokee |
| 5. Habersham | 12. Coweta-Fayette | 19. Central Georgia | 26. Excelsior | 33. Pataula | 40. Slash Pine |
| 6. Hart | 13. Snapping Shoals | 20. Southern Rivers | 27. Canoochee | 34. Three Notch | 41. Colquitt |
| 7. Jackson | 14. Walton | 21. Upson | 28. Altamaha | 35. Mitchell | 42. Grady |